

AIRUSH
KITEBOARDING

PRODUCT GUIDE.

2023 - 2024

AIRUSH.COM





BRAND PILLARS **04**

KITES **10**

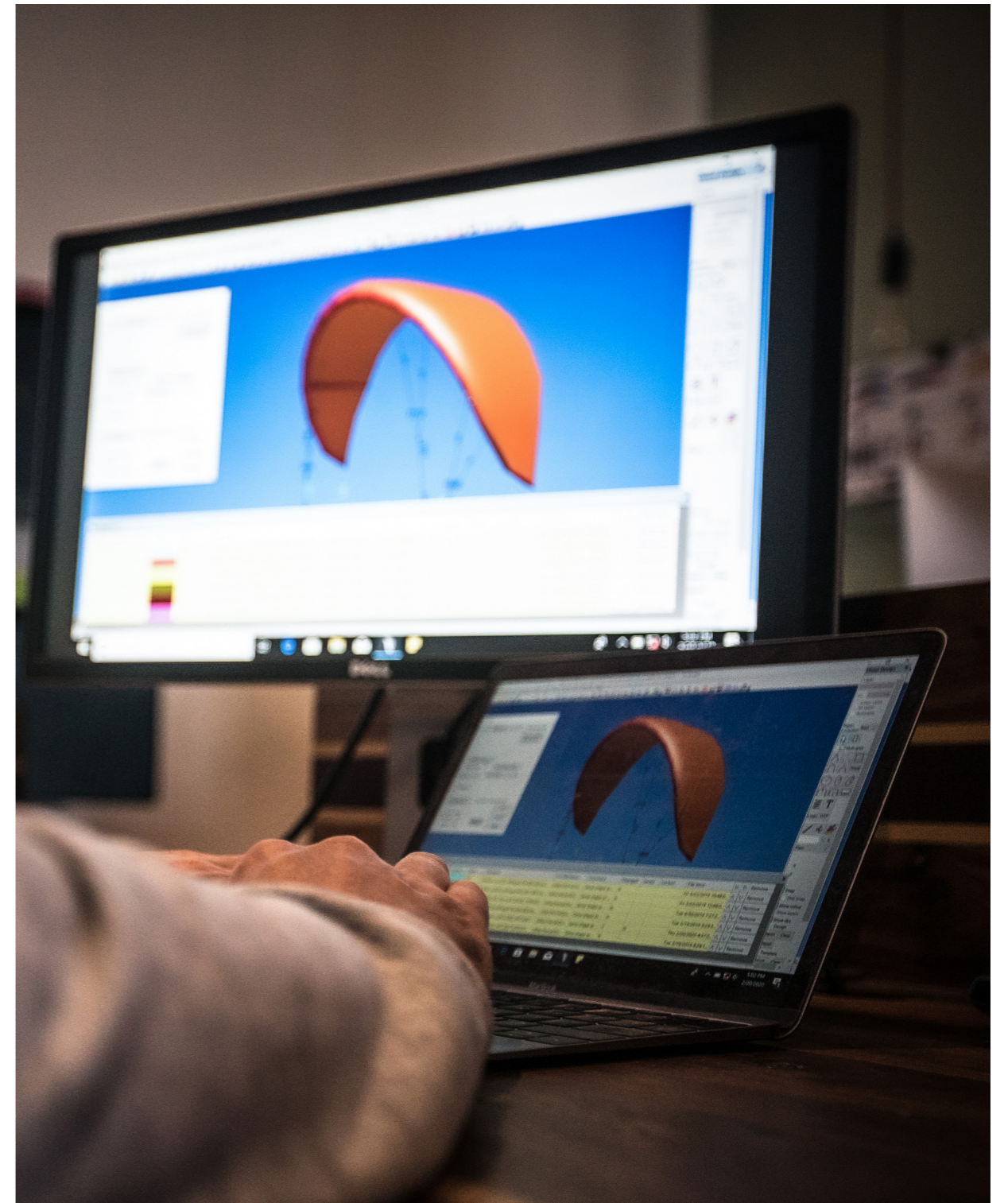
CONTROL BARS **28**

TWINTIPS **34**

SURF DIRECTIONALS **44**

FOILBOARDS **54**

KITE WEIGHTS **60**



Real innovation is not an easy dream to chase. It takes constant dedication and hours of designing, building, testing and then doing it all over again. It's generally not about a quick or simple solution, but more about a big idea that could take years to perfect. Our secret is the combination of designer experience, rapid prototyping, and a group of highly committed athletes and product testers.

This led to the concept of "By Innovators, For Innovators". An alignment between designers working relentlessly to create something new, and riders who are seriously pushing the limits of riding.



Making products that are durable and last as long as possible without sacrificing performance is another thing that makes us tick. We celebrate the idea of buying something that you really want, knowing it works exceptionally well, and being able to use it for a long time.



From being 10 x carbon positive, to our solar powered design center and our relentless pursuit of more sustainable materials and processes, our ethos regarding sustainability and sustainable partnerships truly drives us.

Our fundamental aim is to leave the planet better off than when we started.

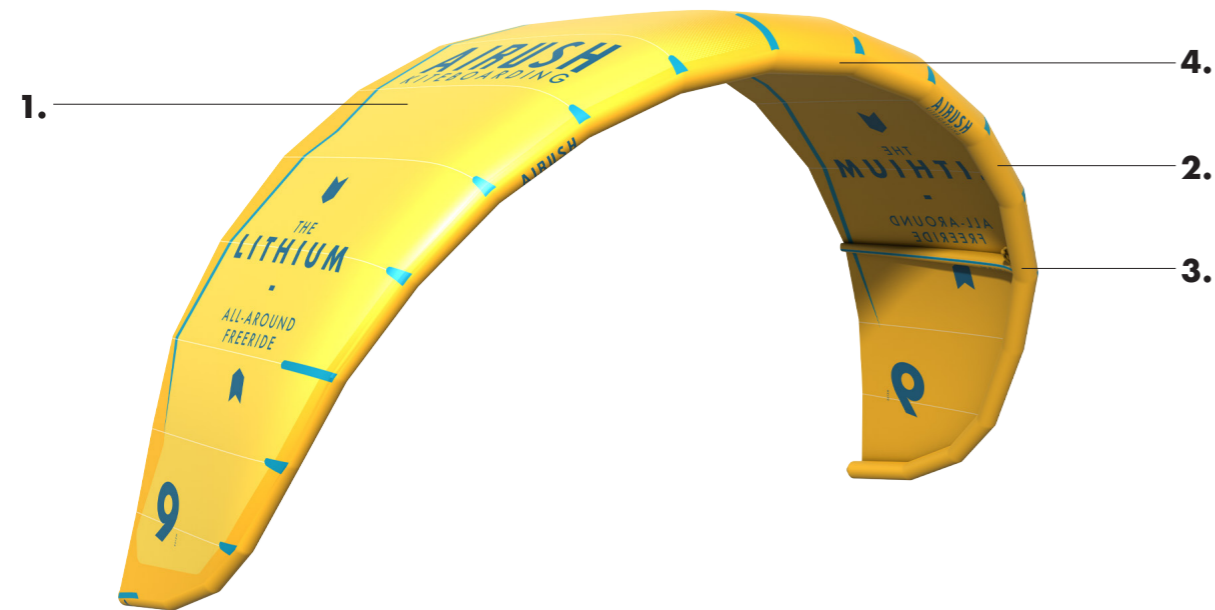




ORIGINALS



As much as we chase versatility within every model, each rider has a specific set of preferences around the way they want to ride in their local conditions. The following quick model comparison will help you to navigate the fundamental features and differences between each kite in the range.



1. TECHNOFORCE D2

This premium fabric is designed with a high-density structure that uses high tenacity double-coated polyester yarn in a double ripstop configuration. The double coating protects the yarn as much as possible from UV and abrasion damage, ensuring that the canopy remains crisp and responsive for as long as possible.

2. HEAVY DUTY LE

By using our Gradient Load Technology on the bridle insert points and leading-edge closure (along with double stitching), as well as Dacron, we have created a heavy-duty leading edge that supports the increased performance demands.

3. FOUR PIECE UNITY STRUT CONNECTION

The Unity Strut Connection provides a solid point from strut to leading edge, to create a stiff structure that helps in performance and relaunching. The four-piece strut has an added double folded triple stitched seam aligned with a 20mm wide webbing strip to reduce points of wear. This increases the durability and rigidity of the struts.

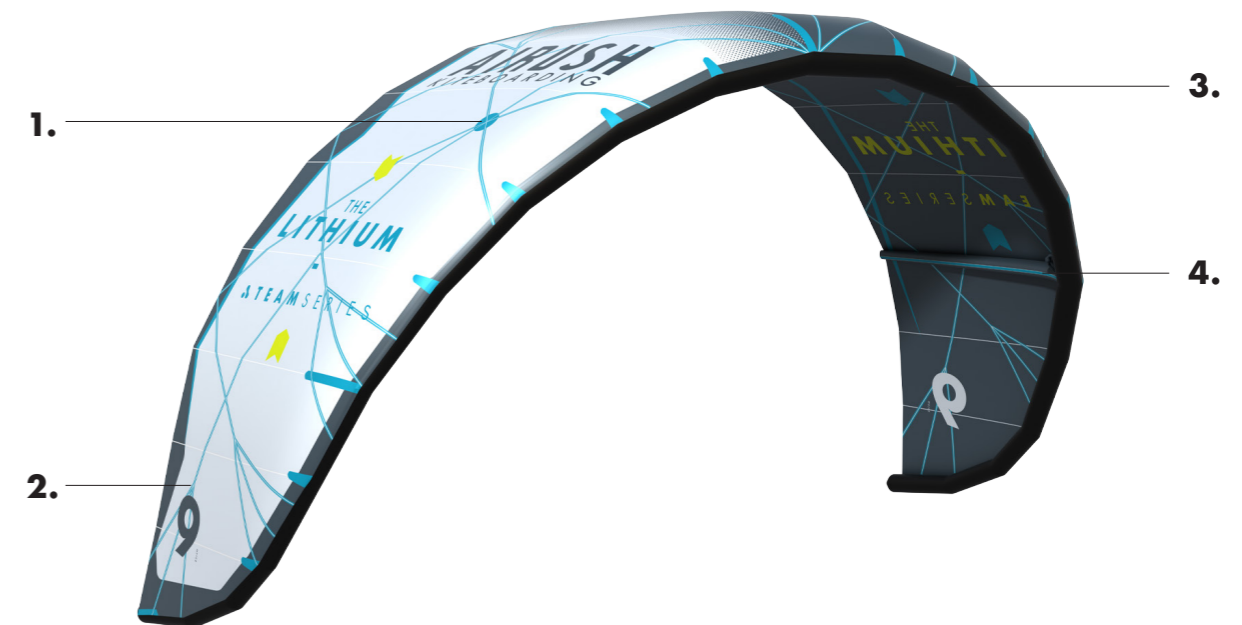
4. SPS & FBI

The oversized SPS valve (Single Point Inflation System) optimizes inflation and deflation. The Fast Bladder Inflation (FBI) features increased wall thickness and oversized diameter tubing, thus eliminating tube kink, reducing stress on your pump, and enabling quick and easy inflation.

TEAM SERIES



The Team Series is a collection that showcases our kite and board models that sit at the pinnacle of all Airush products. Established to enable you to ride exactly what our Pro Team ride, without compromise. With multiple world and national championships, through this rider focused collection, we continue to chase the future of durable lightweight performance.



1. LOAD FRAME

The Airush Load Frame has been the key to setting the ultimate benchmark in durability without compromising on weight. Ultra-high modulus yarns carry the primary load of the canopy, preventing stretch, and increasing long-term performance. The Load Frame is further enhanced by WebTech which is featured in the areas traditionally occupied by Dacron. This enables us to minimize or completely remove the heavier fabric and utilize the ballistic high-modulus web fibers instead – increasing strength and minimizing weight.

2. WEBTECH

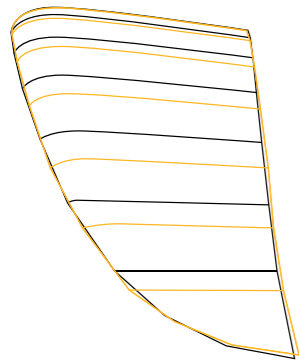
WebTech minimizes or replaces the traditional Dacron reinforcement by channelling the broader loads into the Load Frame through a web 'subframe' of ultra-high molecular polyethylene (ultra-high modulus). This is featured in key areas such as the primary attachment points on the leading edge or the rear attachment points, while also being used to support structural components such as the center strut.

3. HO'OKIPA

Developed in partnership with Challenge Sailcloth, this unique Ultra PE leading edge and strut composite material is 25% lighter and 10x stronger than traditional fabrics. This allows for 50% higher pressure, creating increased stiffness combined with a thinner leading edge. The result is supercharged responsiveness coupled with sublime handling, and of course the long-term performance you expect from Airush.

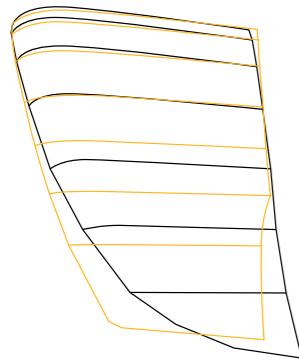
UHMWPE fibers (non-branded Dyneema® or Spectra®) are the lightest and strongest fibers commercially available, with a tensile strength 15x stronger than steel. UHMWPE is created by a gel-spun extrusion process which draws out extremely long chains of polyethylene, aligned along a molecular backbone. This alignment effectively transfers load through the fiber for high modulus and strength.

SELECTING YOUR KITE



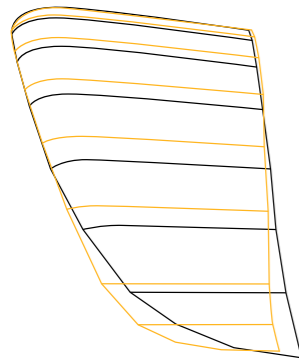
ULTRA vs LITHIUM

The Lithium features more surface area in the wingtips for enhanced steering speed, and has slightly thicker struts and LE for more structural support in higher winds. The Ultra has a smaller LE to fly further forward in the window, with thinner and fewer struts for reduced weight.



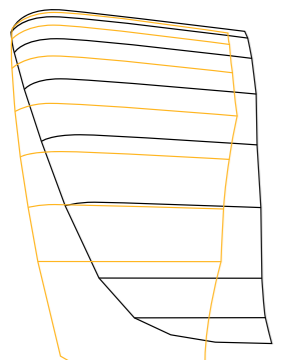
LITHIUM vs SESSION

The Lithium features a longer center chord for more parked power and bar drive, with more sweep in the wingtip for improved relaunch. The square wingtips on the Session create a kite that pivots more, while the reduced sweep creates a more direct input.



LITHIUM vs LIFT

The Lithium features more swept wingtips for better relaunch and parked power for all-around freeride conditions. The high aspect and bridle system on the Lift are focused on jumping as high as possible, while the more vertical wingtips make the kite loop much faster, catching you safely after every loop.



LIFT vs RAZOR

Both 5-strut kites are designed with solid frames to support aggressive, powered riding. The high aspect and bridle system on the Lift are focused on jumping as high as possible with as much ease as possible, while the Razor is focused on freestyle. In sizes 10m and under, the Razor is more jumping oriented while still maintaining the classic freestyle components.



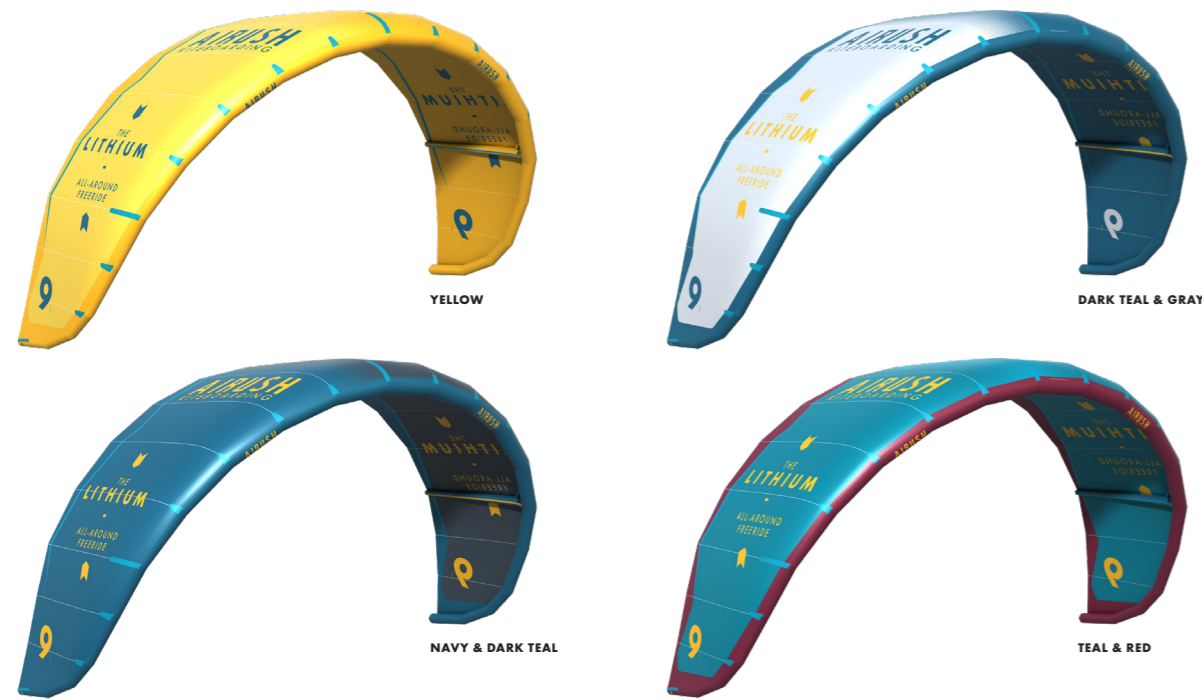
LITHIUM

v13



All-around freeride performance.
Precise steering, balanced & stable.
Powerful delta hybrid with a huge wind range.

For the rider looking for a kite that provides an endless amount of fun on the water, the Lithium is the ultimate all-around freeride performance kite. Versatile in the surf, easy to ride, and light at the bar, the Lithium is predictable and stable in the air, and has incredible park ability. The powerful three strut delta hybrid design enjoys a huge wind range, and combined with the wingtip shape and strut layout, ensures the quickest response through the window as well as instant relaunch.



Unhooked: 25% | Hooked: 100% | Wave: 75% | Foil: 75% | Progression: 100%

KEY FEATURES

- v3 Bridle system.
- Lighter bar pressure.
- New construction.

AVAILABLE IN

5, 6, 7, 8, 9, 10, 12, 14, 17m

CONSTRUCTION

- TECHNO FORCE™/D2 canopy.
- Kevlar Reinforcement.

SIDE PROFILE

- Long chord & deep entry.
- Medium aspect ratio.
- Round wingtip.

FRONT PROFILE

- Delta Hybrid C.
- v3 Pulley bridle.

LITHIUM TEAM

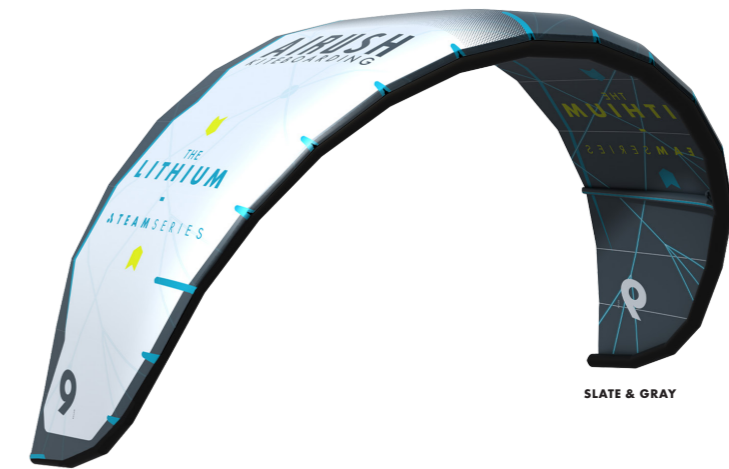
v13



NEW

Team engineered lightweight design for foil, freeride & surf.
Reduced diameter leading edge for maximum efficiency.
Ho'okipa Ultra PE high pressure leading edge & Load Frame.

A team engineered kite that defines the future of minimalistic, lightweight performance design for performance freeride. The Lithium Team is a more responsive, faster, and lighter version of the Lithium due to the innovative Team Series construction. Featuring a thinner, higher pressure leading edge to reduce drag and allow for a higher angle of attack when riding upwind. The unique blend of efficiency, stability and responsiveness creates an extremely versatile product.



Unhooked: 25% | Hooked: 100% | Wave: 75% | Foil: 75%

KEY COMPARISONS

- Team Series construction.
- Fixed bridle.

AVAILABLE IN

7, 8, 9, 10, 12, 14, 17m

CONSTRUCTION

- Ho'okipa Ultra PE high pressure leading edge.
- Ultra PE Load Frame v4 featuring WebTech.

SIDE PROFILE

- Long chord & deep entry.
- Medium aspect ratio.
- Round wingtip.

FRONT PROFILE

- Delta Hybrid C.
- v3 Pulley bridle.

ULTRA v5

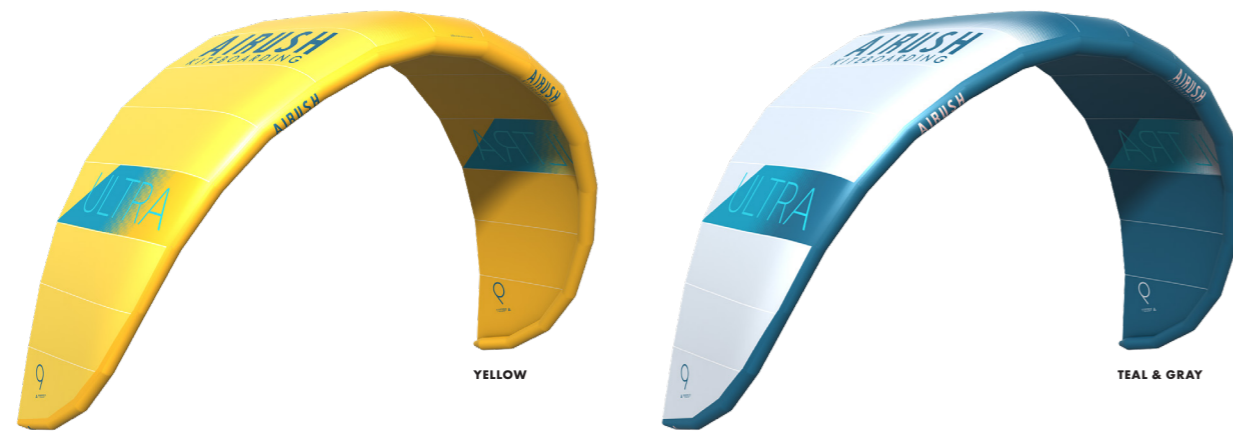
v5



NEW

Ultimate lightweight design for foil, freeride & surf.
 Unique combination of stability & responsive drive.
 High-performance, lightweight single strut geometry.

When it comes to finding the ultimate combination in lightweight performance design for foil, freeride, and surf, look no further than the Ultra. The unique blend of stability, low end power, and responsive drive allows the kite to fly further forward in the window. Pairing the lightweight Single Strut Geometry with a higher tension canopy makes a very responsive and efficient kite.



Unhooked: 25% | Hooked: 100% | Wave: 75% | Foil: 100% | Progression: 100%

KEY FEATURES

- Lightweight Single Strut Geometry.
- Improved canopy tension & rigidity to increase responsiveness.
- Easy relaunch.

AVAILABLE IN

4, 5, 6, 7, 8, 9, 10, 12, 14, 17m

CONSTRUCTION

- TECHNO FORCE™/D2 canopy.
- Kevlar Reinforcement.

SIDE PROFILE

- Medium chord & medium entry.
- Medium aspect ratio.
- Round wingtip.

FRONT PROFILE

- Open C.
- v3 Pulley bridle.

ULTRA TEAM

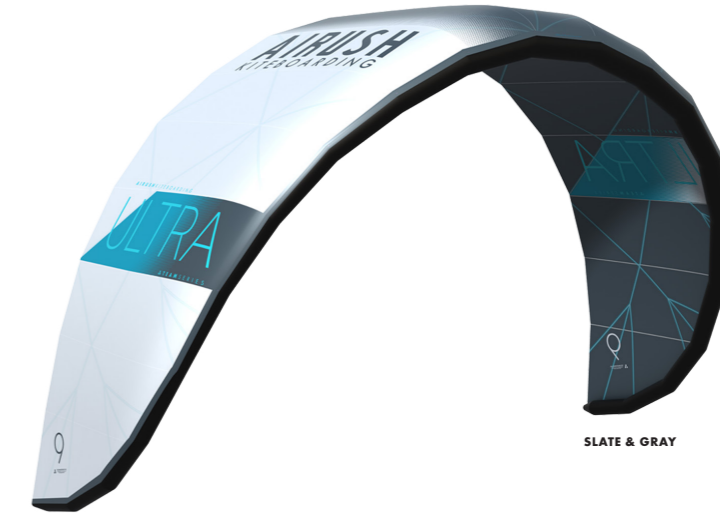
v5



NEW

Team engineered lightweight design for foil, freeride & surf.
 Reduced diameter leading edge for maximum efficiency.
 Ho'okipa Ultra PE high pressure leading edge & Load Frame.

The Ultra Team features the new Airush Team Series construction. Ho'okipa is a material technology that allows the kite to find an optimal balance between responsiveness, lightweight, and long team performance. Ho'okipa is made of Ultra PE fiber that makes the leading edge 10x stronger and stiffer than traditional fabrics. The combination of our proven Single Strut Geometry, with the new narrow diameter high pressure leading edge and high-tension canopy is key; this is what allows the Ultra Team to fly forward in the window, creating the perfect balance for light wind performance.



Unhooked: 25% | Hooked: 100% | Wave: 75% | Foil: 100%

KEY COMPARISONS

- Lightweight single strut geometry.
- Improved canopy tension & rigidity for increased responsiveness.
- Fixed bridles on sizes under 12m.
- Narrow diameter high pressure Ho'okipa Ultra PE leading edge.
- Ultra PE Airush Load Frame v4 featuring WebTech.
- Reduced weight.

AVAILABLE IN

7, 8, 9, 10, 12, 14, 17m

CONSTRUCTION

- Ho'okipa Ultra PE high pressure leading edge.
- Airush Ultra PE Load Frame v4 featuring WebTech.

SIDE PROFILE

- Medium chord & medium entry.
- Medium aspect ratio.
- Round wingtip.

FRONT PROFILE

- Open C.
- Fixed bridle.

SESSION

v2



NEW

Versatile surf, strapless & performance freeride.
Perfect drift, agile turning & effortless boosting capability.
v3 Pulley Bridle for maximum depower & wind range.

The Session is for the rider wanting a versatile surf orientated kite, with performance strapless and freeride capabilities, all in a single package. The unique canopy shaping features a relatively fine entry, which allows the kite to fly forward in the window when required. While the sheeting angle, aspect ratio, and large wing tips create a kite that can pivot on a dime and drift deep into the window when you need it to.

V3.1 Bridles ensure a huge wind range and keep the kite steering as you are sheeting out, ideal for powerful carving transitions, wave top turns, or strapless riding. All of this translates into perfect drift, agile turning, and effortless boosting.



Unhooked: 50% | Hooked: 100% | Wave: 100% | Foil: 50% | Progression: 75%

KEY FEATURES

- Low aspect ratio.
- Agile turning, direct steering & the perfect amount of drift.

AVAILABLE IN

4, 5, 6, 7, 8, 9, 10, 12, 14m

CONSTRUCTION

- TECHNO FORCE™/D2 canopy.
- Kevlar Reinforcement.

SIDE PROFILE

- Long chord & fine entry.
- Low aspect ratio.
- Square wingtip.

FRONT PROFILE

- Open C.
- v3 Pulley bridle.

SESSION TEAM

v2



NEW

Versatile surf, strapless & performance freeride.
Perfect drift, agile turning & effortless boosting capability.
Ho'okipa Ultra PE leading edge & Load Frame.

The Session Team featuring Ho'okipa material, is a versatile surf oriented kite with performance freeride capabilities. Ho'okipa is a unique ultra PE woven leading edge that is up to 10x stronger and stiffer than traditional fabrics. The result is incredible responsiveness and lightweight, with the long-term performance you expect from Airush. This combined with the fixed bridle, offers you direct steering and smooth power delivery with lighter bar pressure. With narrower LE and Struts, the Session Team has levelled its agility capabilities up.



Unhooked: 50% | Hooked: 100% | Wave: 100% | Foil: 50%

KEY COMPARISONS

- Low aspect ratio.
- Agile turning, direct steering & the perfect amount of drift.
- Fixed bridle.

AVAILABLE IN

7, 8, 9, 10, 12m

CONSTRUCTION

- Ho'okipa Ultra PE high pressure leading edge.
- Airush Ultra PE Load Frame v4 featuring WebTech.

SIDE PROFILE

- Long chord & fine entry.
- Low aspect ratio.
- Square wingtip.

FRONT PROFILE

- Open C.
- Fixed bridle.

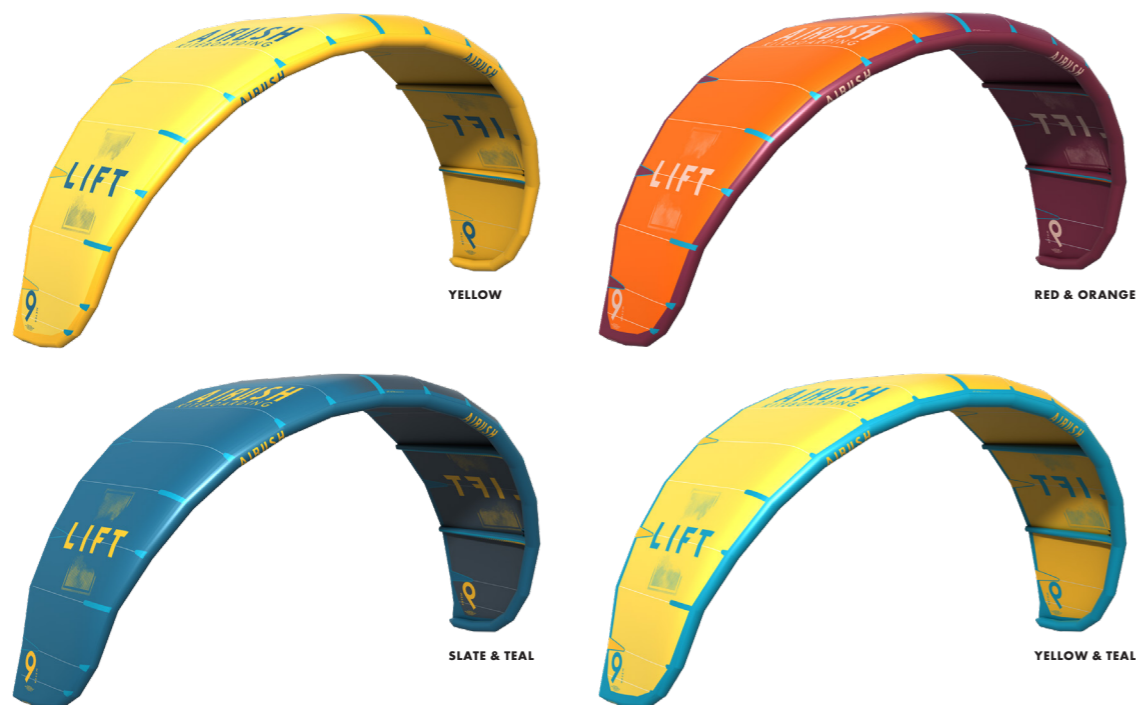
LIFT

v3



Performance Freeride & Big Air machine.
Explosive power, smooth kiteloops, massive lift & hangtime.
Stable airframe for high wind control.

The Lift is all about boosting, hangtime, and taking performance freeride to new heights. Designed for the rider looking for exceptional hangtime, explosive power and stability in the wildest conditions. Ease of use, paired with incredible top end performance, make the Lift the ultimate big air machine.



Unhooked: 75% | Hooked: 100% | Wave: 50% | Foil: 70% | Progression: 50%

KEY FEATURES

- New design, developed with our big air team.
- Intuitive loop and climb performance.
- Five struts for stability in extreme conditions.
- New and Improved bridle for enhanced steering response.

AVAILABLE IN

7, 8, 9, 10, 12, 14, 17m

CONSTRUCTION

- TECHNO FORCE™/D2 canopy.
- Kevlar Reinforcement.

SIDE PROFILE

- Medium chord & fine entry
- High aspect ratio
- Round wingtip

FRONT PROFILE

- Wide open c
- Compact single pulley bridle

LIFT TEAM

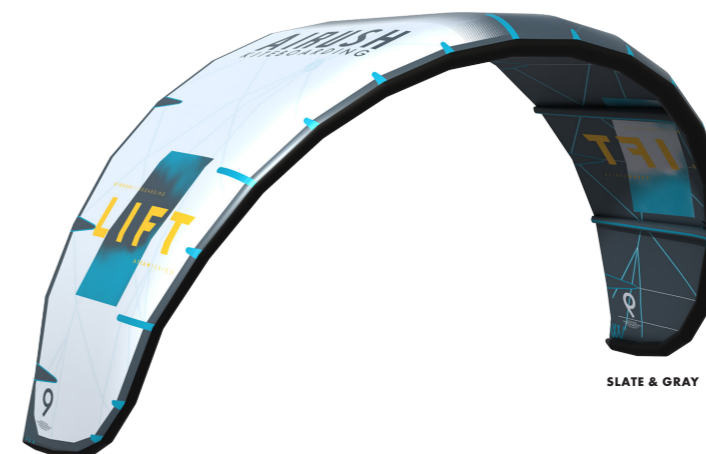
v3



NEW

Performance Freeride & Big Air machine.
Explosive power, smooth kiteloops, massive lift & hangtime.
Innovative Team Series construction.

The Lift Team in the Team Series Construction is all about boosting, hangtime, and taking performance freeride to new heights. Designed for the rider looking for exceptional hangtime, explosive power and stability in the wildest conditions. Ease of use, paired with incredible top end performance, makes the Lift the ultimate big air machine.



Unhooked: 75% | Hooked: 100% | Wave: 50% | Foil: 70% | Progression: 50%

KEY COMPARISONS

- New design, developed with our big air team.
- Intuitive loop and climb performance.
- Five struts for stability in extreme conditions.
- New and Improved bridle for enhanced steering response.
- Ultra light high-tech composite materials.

AVAILABLE IN

7, 8, 9, 10, 12, 14m

CONSTRUCTION

- Ho'okipa Ultra PE high pressure Leading edge
- Airush Ultra PE Load Frame v4 featuring WebTech.

SIDE PROFILE

- Medium chord & fine entry
- High aspect ratio
- Round wingtip

FRONT PROFILE

- Wide open c
- Compact single pulley bridle



RAZOR

v10

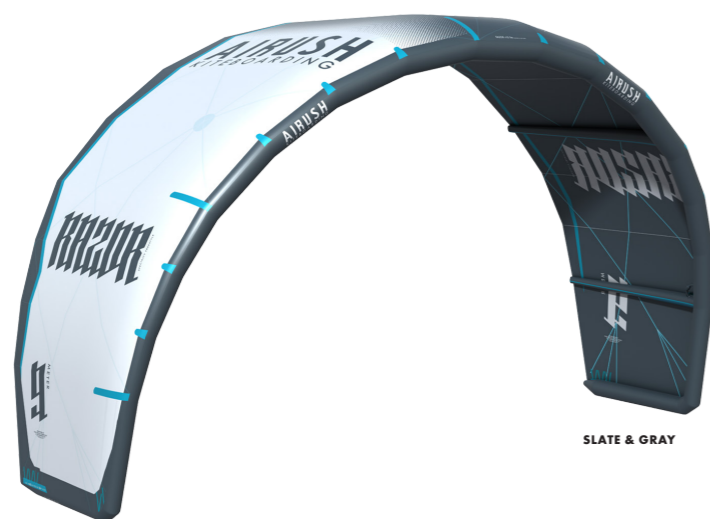


Unrivalled unhooked performance & precision.

Mind-blowing pop & slack.

5-line Freestyle & Big Air blend.

The Razor offers unrivalled unhooked performance and precision that delivers way beyond the expectations of a purist freestyle C-kite. With specific freestyle and wakestyle bridle settings, the Razor is a new generation 5-line freestyle and Big Air blend that combines unrivalled unhooked performance with more boost. Designed with World Champion Alex Pastor to provide mind-blowing pop and slack, the larger sizes are geared towards freestyle while the smaller sizes have been optimized for Big Air and looping.



Unhooked: 100% | Hooked: 100% | Wave: 50% | Foil: 25% | Progression: 50%

▶ KEY FEATURES

- Freestyle & wakestyle settings.
- Smaller sizes are optimal for Big Air & looping.
- Larger sizes are perfect for freestyle.
- Comes with a 5th line to attach to the Team Bar.

AVAILABLE IN

7, 8, 9, 10, 11, 13, 15m

CONSTRUCTION

- Airush Load Frame v4 featuring WebTech.
- TECHNO FORCE™/D2 canopy.
- Kevlar Reinforcement.

SIDE PROFILE

- Short chord & fine entry.
- High aspect ratio.
- Square wingtip.

FRONT PROFILE

- True c shape.
- 5th line.

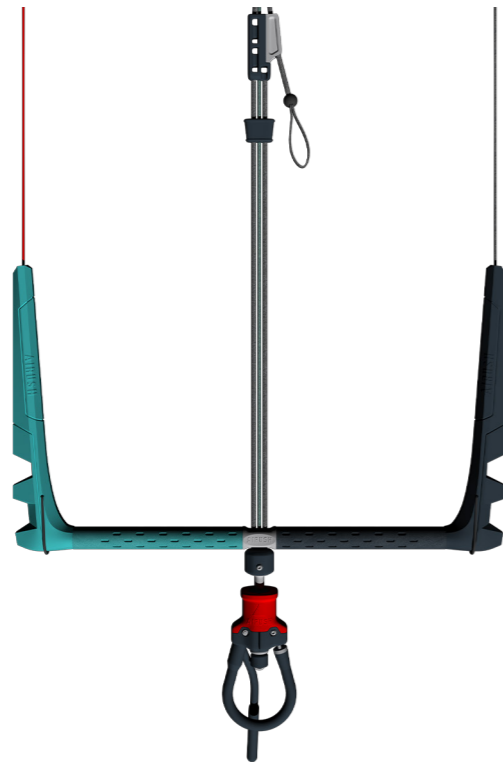




v2

Reliable & easy to use control system.
Cleave trim system with adjustable throw.
Compatible with all 4-line Airush kites.

Simplicity without compromising quality, the Ride Bar is the ideal companion. An easy to use, reliable Aero cleat depower system with a tool-less position adjustment allows for the bar to be quickly and simply set up for riders with shorter reach. The durable EVA injected bar ends are flexible for an overall better kite response and offers better bar float. Paired with any 4-line kite, the 24m flying lines, Airush IQR, and one-handed release and reset system complies with IKO and BKSA teaching standards with the Low-Y on the center lines, allowing for a quick single line flag out.



Line Length | Front: 9m+14m | Rear: 9m + 14m

▶ KEY FEATURES

- Aluminum reinforced bar ends.
- Adjustable cleat.
- Full EVA bar ends.
- Stainless steel center fitting.

AVAILABLE IN

50, 60cm

CONSTRUCTION

- Power bracket with integrated pulley.
- Adjustable cleat.
- Webbing loop trim handle.



NEW

TEAM BAR

v2

Compatible with all 4-line Airush kites.
Compatible with the Razor as a 5th-line bar.
Now available in 3 different lengths.

A team engineered 4-line bar that is optimized for the no nonsense advanced freestyle and looping enthusiast. Featuring adjustable, multi-length, heavy-duty front and rear lines, the Team Bar is packed with the features you want in order to customize and suit your preferences. The Team bar is compatible with the Razor as a 5th-line bar.



Line Length | Front: 9m + 6m + 4m + 2m +2m | Rear: 9m + 6m + 4m + 2m +2m

▶ KEY FEATURES

- Compatible with the Razor as a 5th-line bar.
- 2 x PU covered center lines.
- 50cm bar throw.
- Full EVA floats.
- Ergonomic 316L Stainless Steel center fitting.

AVAILABLE IN

45, 50, 60cm

CONSTRUCTION

- 3 fixed bar lengths, 45cm, 50cm and 60cm.
- No nonsense bomb proof construction.
- New embossed sanded EVA grip.
- Bearing IQR.



NEW



SWITCH

v11



Easy & comfortable freeride board.
 Step down rail for maximum edge control.
 Multizone Biotech core.

The longest running board model in kiteboarding history, the Switch is the ultimate refined freeride machine. Designed for all-around fun riding, combining ease of use with forgiving and friendly handling to match the needs of progressing kilters and those looking for a comfortable ride. With the new kiter in mind, the progressive single concave provides excellent comfort, for a smooth and lively riding experience. Thin rails ensure a clean water release and offer sensationally low drag and easy upwind tracking.



Freeride: 100% | Freestyle: 25% | Wakestyle: 0% | Progression: 100%

KEY FEATURES

- AK Durable Supply Co. bindings.
- AK Durable Supply Co. fins.
- AK Durable Supply Co. handle.

AVAILABLE IN

132x39, 135x40, 138x41, 141x42, 144x43, 148x44, 152x45

CONSTRUCTION

- AR Glass.
- ABS reinforced inserts & rails.
- Paulownia multizone biotech core.

SIDE PROFILE

- Freeide rocker.

FRONT PROFILE

- Freeride specific outline.

SWITCH TEAM

v11



Intuitive & refined performance freeride shape.
 Step down rail for maximum edge control.
 Uni-directional center stringer for added response.

The Switch Team is an extremely responsive performance freeride board which excels when loading, popping, landing and cruising. Even in the choppiest conditions, this board is really fun and easy to set on rail. The Switch Team is playful for carving, benefitting from just the right amount of grip with the thinner rails, tuned flex, and outline. Transitioning through carves along the board's rails is predictable and intuitive, while the uni-directional basalt I-beam structure offers improved stiffness between the feet and faster reflex for enhanced freestyle performance.



Freeride: 100% | Freestyle: 50% | Wakestyle: 0% | Progression: 75%

KEY COMPARISONS

- Basalt strip for increased durability.
- AK Durable Supply Co. fins.
- AK Durable Supply Co. handle.

AVAILABLE IN

132x39, 135x40, 138x41, 141x42

CONSTRUCTION

- AR Glass.
- Basalt weave.
- Paulownia multizone biotech core.

SIDE PROFILE

- Freeide rocker.

FRONT PROFILE

- Freeride specific outline.

APEX

v8



Versatile twintip for intermediate to advanced riders.
 Double concave with deep center spine for soft landings.
 Double basalt laminate for increased responsiveness.

The Apex is designed as an all-around versatile twintip for intermediate to advanced riders, using either boots or bindings, in both freeride and big air. The double concave with a solid center spine for soft landings and better edge grip when riding on flat water, and a double basalt fiber laminate for increased responsiveness and bombproof durability, make the Apex perfect for hooked and unhooked powered tricks, allowing riders to push their limits.



Freeride: 100% | Freestyle: 75% | Wakestyle: 25% | Progression: 75% | Big Air: 100%

KEY FEATURES

- Re-engineered flex.
- Revised outline for performance in more conditions.
- Brand new lamination for added pop when jumping big.
- Added smaller sizes.

AVAILABLE IN

133x39, 136x40, 139x41, 142x42

CONSTRUCTION

- AR Glass
- ABS reinforced inserts and rails.
- Paulownia multizone biotech core.

APEX TEAM

v8



Versatile twintip for intermediate to advanced riders.
 Double concave with deep center spine for soft landings.
 Carbon basalt laminate for reflex & lightweight.

The Apex Team is designed as an all-around versatile twintip for performance freeride and big air. The double concave with a solid center spine both aid soft landings, and better edge grip when riding on flat water. The premium Carbon Basalt construction increases performance for added pop when jumping big, making the Apex Team perfect for hooked and unhooked powered tricks, allowing riders to push their limits.



Freeride: 100% | Freestyle: 75% | Wakestyle: 25% | Progression: 75% | Big Air: 100%

KEY COMPARISONS

- Premium carbon performance for added pop when jumping big.
- Revised outline for performance in more conditions.
- Added smaller sizes.

AVAILABLE IN

133x39, 136x40, 139x41, 142x42

CONSTRUCTION

- Ultra-light top & bottom sheet.
- Carbon basalt hybrid laminate.
- Paulownia wood core.

SIDE PROFILE

- Freeride/Freestyle rocker.

FRONT PROFILE

- Crossover specific outline.

SIDE PROFILE

- Freeride rocker.

FRONT PROFILE

- Freeride specific outline.

LIVEWIRE

v8



Performance freestyle & park-specific twintip.
Most aggressive & durable board available.
Duratech Response Glass with Triax technology.

The Livewire is a refreshing take on a freestyle, park and wakestyle board, providing tons of performance whilst not compromising on riding comfort. Boots or straps, the Livewire is responsive underfoot, grips incredibly well, and the pop will fire you into your next move. Featuring a HD Grindrite sintered base, deep channel, and concave combo bottom in conjunction with a high rocker, this combination of features makes the Livewire the most aggressive and durable freestyle and wakestyle board in our range. Suited to those wanting to ramp up their park riding.



Freeride: 25% | Freestyle: 100% | Wakestyle: 100% | Progression: 0%

KEY FEATURES

- Full 3D deck shape.
- Deep channel & concave combo bottom shape.
- Rail channels.

AVAILABLE IN

138x41, 140x42, 142x43, 147x43

CONSTRUCTION

- Tuned flex.
- HD Gridrite sintered base.

SIDE PROFILE

- Freestyle/Wakestyle rocker.

FRONT PROFILE

- Park specific outline.

LIVEWIRE TEAM

v8



High performance freestyle machine.
Perfect balance of weight, rocker & flex for response.
Carbon Triax Technology.

The Livewire Team is designed for the high-performance freestyle rider, who is focused on the perfect balance of weight, rocker, flex, and response. Ideal for boots, the optimized 3D deck, deep channel and concave combo bottom (in conjunction with the highest rocker in our range) makes this board a competition machine. The Carbon Triax Technology combined with 12K spread toe carbon adds another dimension of laminate strength. For an insane amount of pop, the Livewire Team makes fast rotations during complex maneuvers effortless, and has exceptional impact absorption for controlled landings, all while remaining light underfoot.



Freeride: 25% | Freestyle: 100% | Wakestyle: 75% | Progression: 0%

KEY COMPARISONS

- Deep channel & concave combo bottom shape.
- Rail channels.
- ABS 2.0 reinforced inserts.

AVAILABLE IN

138x41, 140x42, 142x43

CONSTRUCTION

- Triax and wide tow carbon lamination.
- Triax carbon.
- Paulownia multizone biotech core.

SIDE PROFILE

- Freestyle/Wakestyle rocker.

FRONT PROFILE

- Competition Freestyle specific outline.

LIVEWIRE AIR

v8



NEW

DIAMOND

v6



Performance big air.
Carbon Triax technology.
Perfect balance of weight, rocker & flex for response.

Blending aspects of our legendary Livewire Series with the demand of our Big Air team, the Livewire Air features a high-speed rocker with a channel bottom for improved grip and control at high speed, takeoffs, and landings. The Livewire Air is our high-performance big air board. The combination of the weight, rocker and flex is designed for explosive pops, maximum control, and easy landings. Using Carbon Triax technology, this board is as indestructible as they come.



Freeride: 100% | Freestyle: 75% | Wakestyle: 25% | Big Air: 100%

KEY FEATURES

- New Big Air performance specific board.
- Channel bottom for control at speed.
- Explosive pops, maximum control, easy landings.

AVAILABLE IN

127x38, 132x39, 137x40, 141 x 41

CONSTRUCTION

- High gloss durable top sheet.
- Double layer basalt construction.
- Lightweight bottom sheet.

SIDE PROFILE

- Big Air rocker.

FRONT PROFILE

- Big Air/Freestyle crossover specific outline.

All-around freeride twintip for a lighter rider.
Narrow stance & softer flex pattern.
Single basalt fibre lamination for lightweight reflex.

The Diamond is the ultimate all-around female freeride board. Created with the smaller, lighter rider in mind, the Diamond has a narrower relative outline, softer flex pattern, and fine-tuned narrowed stance. A double concave with a solid spine allows for smooth landings, while a basalt fiber lamination provides the flex, lightness and durability. This makes it perfect for riders pushing their limits without compromising its playful character for those progressing.



Freeride: 100% | Freestyle: 100% | Wakestyle: 25% | Progression: 75%

KEY COMPARISONS

- Women's specific lightweight laminate.
- Fine-tuned narrower stance.
- Matte PBT base for improved scratch resistance.

AVAILABLE IN

130x38, 133x39, 136x40

CONSTRUCTION

- High gloss durable top sheet.
- Single layer basalt construction.
- TPU lightweight bottom sheet.

SIDE PROFILE

- Freeride/Freestyle rocker.

FRONT PROFILE

- Freeride/Freestyle crossover specific outline.



CYPHER

v4



High speed strapless or strapped blasting machine.
Parallel outline with offset strap options.
Durable & flexible Reflex Glass construction.

The Cypher Reflex Glass is optimized to be stable at speed with its flatter rocker, compact outline, and parallel rails. This makes it ideal for dedicated strapless freestyle, riding new school strapped or ripping small surf. The single to double concave maintains its surf heritage while softening the ride in chop. Boost, pop or shred, the Cypher delivers.



Cross-shore: 50% | Lightwind: 75% | Wave Height: 50% | Onshore: 100%

KEY FEATURES

- 1" Thinner for added performance.
- Strapless or strapped flatwater & onshore shape.
- Full Deck Chord Traction

AVAILABLE IN

4'10" (147cm) x 18" (45.7cm) x 1" (2.54cm) x 11.4L
5'0" (152cm) x 18.5" (47cm) x 1" (2.54cm) x 12.6L
5'2" (157cm) x 19" (48cm) x 1" (2.54cm) x 12.8L

CONSTRUCTION

- Dual I-Beam Composite Stringer.
- Durable High Reflex Glass Laminate.
- Lightweight Fused EPS Core.

CYPHER TEAM

v4



High speed strapless blasting & boosting machine.
Parallel outline for stability.
Durable & lightweight Reflex Carbon construction.

The Cypher Team is optimized to be stable at speed with its flatter rocker, compact outline, and parallel rails. This makes it ideal for dedicated strapless freestyle, or ripping small surf. The single to double concave maintains its surf heritage, while softening the ride in chop. The Reflex Carbon construction offers the best combination of light weight and maximum durability. Boost, pop or shred, the Cypher delivers.



Cross-shore: 50% | Lightwind: 75% | Wave Height: 50% | Onshore: 100%

KEY FEATURES

- 1" Thinner for added performance.
- Strapless or strapped flatwater & onshore shape.
- Full Deck Chord Traction

AVAILABLE IN

4'10" (147cm) x 18" (45.7cm) x 1" (2.54cm) x 11.4L
5'0" (152cm) x 18.5" (47cm) x 1" (2.54cm) x 12.6L
5'2" (157cm) x 19" (48cm) x 1" (2.54cm) x 12.8L

CONSTRUCTION

- Dual I-Beam composite stringer.
- Durable high reflex glass laminate.
- Lightweight fused EPS core.

SIDE PROFILE

- Flatter tail rocker
- Flatter center rocker
- Medium nose rocker

TOP PROFILE

- Medium tail.
- Central wide point.
- Wide nose.

SIDE PROFILE

- Flatter tail rocker.
- Flatter center rocker
- Medium nose rocker.

TOP PROFILE

- Medium tail.
- Central wide point.
- Wide nose.

AMP

v6



NEW

All-around surf shape with offset strap option.
Fast rocker with maneuver oriented outline.
Durable & flexible Reflex Glass construction.

The AMP Reflex Glass is our legendary all-around surf shape that combines a flat rocker for high speed and control with a higher curve outline for optimal drive and maneuverability. The fuller nose aids the low wind performance, while the single to double concave absorbs chop effortlessly. Parallel or offset stance positions, allow for a variety of strap or strapless options. The AMP sets the standard in smaller wave and versatile performance.



Cross-shore: 75% | Lightwind: 75% | Wave Height: 75% | Onshore: 75%

KEY FEATURES

- New construction.
- All-around shape.
- Full deck chord traction.

AVAILABLE IN

5'2" (157cm) x 18.25" (46.4cm) x 2.0" (5.1cm) x 20.4L
5'4" (163cm) x 18.75" (47.6cm) x 2.0" (5.1cm) x 21.6L
5'6" (168cm) x 19.25" (48.9cm) x 2.0" (5.1cm) x 22.9L

CONSTRUCTION

- Dual I-Beam composite stringer.
- Durable high reflex glass laminate.
- Lightweight fused EPS core.

SIDE PROFILE

- Medium tail rocker.
- Medium center rocker.
- Medium nose rocker.

TOP PROFILE

- Narrow tail.
- Central wide point.
- Wide nose.

AMP TEAM

v6



NEW

All-around surf shape without footstrap inserts.
Fast rocker with maneuver oriented outline.
Durable & lightweight Reflex Carbon construction.
New Dual I-Beam Composite Stringers

The AMP Team is our legendary all-around surf shape in a premium Reflex Carbon construction. It combines a flat rocker for high speed and control with a higher curve outline for optimal drive and maneuverability. The fuller nose aids the low wind performance, while the single to double concave absorbs chop effortlessly. The Reflex Carbon construction offers the best combination of lightweight and maximum durability. The AMP sets the standard in smaller wave and strapless riding performance.



Cross-shore: 75% | Lightwind: 75% | Wave Height: 75% | Onshore: 75%

KEY FEATURES

- New construction.
- All-around shape.

AVAILABLE IN

5'2" (157cm) x 18.25" (46.4cm) x 2.0" (5.1cm) x 20.4L
5'4" (163cm) x 18.75" (47.6cm) x 2.0" (5.1cm) x 21.6L
5'6" (168cm) x 19.25" (48.9cm) x 2.0" (5.1cm) x 22.9L

CONSTRUCTION

- Full biaxial active carbon top & bottom deck.
- Dual I-Beam composite stringer.
- Lightweight fused EPS core.

SIDE PROFILE

- Medium tail rocker.
- Medium center rocker.
- Medium nose rocker.

TOP PROFILE

- Narrow tail.
- Central wide point.
- Wide nose.

OS-1 TEAM



NEW

- Down-the-line performance shape.
- High rocker with narrow nose & tail.
- Durable & lightweight Reflex Carbon construction.
- New Dual I-Beam composite stringers.

The OS-1 Team is our down-the-line performance oriented board. The high rocker allows you to edge into the steepest of waves, while the narrow nose and tail open up its full turning abilities and top to bottom riding. The Reflex Carbon construction offers the best combination of flex and maximum durability.



Cross-shore: 75% | Lightwind: 75% | Wave Height: 75% | Onshore: 75%

KEY FEATURES

- Down-the-line shape.

AVAILABLE IN

5' 10" (178cm) x 18" (45.7cm) x 2.05" (5.2cm) x 21.8L
5' 10" (178cm) x 18"5 (47cm) x 2.05" (5.2cm) x 22.4L

CONSTRUCTION

- Full biaxial Reflex Carbon top & bottom deck.
- Dual I-Beam composite stringer.
- Ecoboard project.

SIDE PROFILE

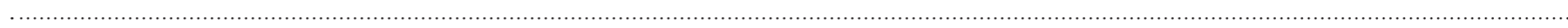
- High tail rocker.
- Medium center rocker.
- High nose rocker.

TOP PROFILE

- Narrow tail.
- Central wide point.
- Narrow nose.







FOIL SKATE

v3



Minimalist crossover low volume foil board.
Ideal with fins when riding without a foil.
Built in a bombproof twintip wood core construction.

If you're looking for a minimalist crossover solution, the Foil Skate offers a twintip style construction in a foil board shape. Sitting closer to the water compared to higher volume boards, makes it easier to get going if you're used to riding twintips. The stiff wood core provides an incredibly stable ride and is extremely durable. The Foil Skate includes low drag foil inserts, and optional fin connections, giving you the choice of traditional skate style directional riding, when your foil isn't connected.



Entry-Level: 100% | Freeride: 75% | Carving: 100% | Racing: 25%

KEY FEATURES

- Closed bottom M6 foil mounts – single side.
- Durable cast PU side walls.
- Low-drag foil specific upwind outline.

AVAILABLE IN

124x46, 145x48

CONSTRUCTION

- Midweight triaxial fiberglass.
- UD carbon.
- Paulownia multizone biotech core.

SIDE PROFILE

- Flatter nose rocker.
- Progressive center rocker.
- Flat tail rocker.

TOP PROFILE

- Wide nose.
- Forward wide point
- Narrow tail.

TEAM FOIL BOARD

v3



NEW

Compact foil board for riding with or without straps.
Concave deck with bevelled rails & convex nose.
Durable & responsive carbon construction.

If you're looking for a compact carbon solution, the Team Foil Board is an extremely fun and skatey board for advanced freeriders, riding strapped or strapless. A compact foilboard for riding with or without straps with an ultra-light & durable construction and a concave deck with bevelled rails & convex nose. This board is excellent for carving and performance freeride.



Entry-Level: 100% | Freeride: 75% | Carving: 100% | Racing: 25%

KEY FEATURES

- Concave deck with performance bottom shape.
- New construction.
- V-Strap & single front strap options.
- 10" US Foil boxes for micro trim.

AVAILABLE IN

98cm (38.5") x 42cm (16.5") x 3.7cm (1.45") x 10.6L
108cm (42") x 45cm (17.7") x 3.7cm (1.45") x 12.6L
120 cm (47.2") x 47cm (18.5") x 3.7cm (1.45") x 14.6L

CONSTRUCTION

- Biaxial carbon deck.
- Tough sandwich layer, deck & bottom.
- UD carbon bottom.

SIDE PROFILE

- Medium tail rocker.
- Medium center rocker.
- Medium nose rocker.

TOP PROFILE

- Narrow tail.
- Central wide point.
- Wide nose.



LITHIUM

5m	1.95kg	18 - 40+	Knots	Ride Bar	50cm	75kg Avg. Rider Weight.
6m	2.35kg	17 - 36	Knots	Ride Bar	50cm	75kg Avg. Rider Weight.
7m	2.40kg	16 - 35	Knots	Ride Bar	50cm	75kg Avg. Rider Weight.
8m	2.80kg	15 - 33	Knots	Ride Bar	50cm	75kg Avg. Rider Weight.
9m	3.00kg	14.5 - 32	Knots	Ride Bar	50cm	75kg Avg. Rider Weight.
10m	3.25kg	14 - 30	Knots	Ride Bar	50cm	75kg Avg. Rider Weight.
12m	3.50kg	10 - 25	Knots	Ride Bar	50 - 60cm	75kg Avg. Rider Weight.
14m	3.90kg	7 - 18	Knots	Ride Bar	50 - 60cm	75kg Avg. Rider Weight.
17m	4.46kg	6 - 16	Knots	Ride Bar	50 - 60cm	75kg Avg. Rider Weight.

ULTRA

4m	TBC	21 - 40+	Knots	Ride Bar	50cm	75kg Avg. Rider Weight
5m	TBC	17 - 33+	Knots	Ride Bar	50cm	75kg Avg. Rider Weight.
6m	TBC	16 - 31	Knots	Ride Bar	50cm	75kg Avg. Rider Weight.
7m	TBC	15 - 30	Knots	Ride Bar	50cm	75kg Avg. Rider Weight.
8m	TBC	14 - 29	Knots	Ride Bar	50cm	75kg Avg. Rider Weight.
9m	TBC	13 - 28	Knots	Ride Bar	50cm	75kg Avg. Rider Weight.
10m	TBC	12 - 25	Knots	Ride Bar	50cm	75kg Avg. Rider Weight.
12m	TBC	10 - 22	Knots	Ride Bar	50 - 60cm	75kg Avg. Rider Weight.
14m	TBC	7 - 18	Knots	Ride Bar	50 - 60cm	75kg Avg. Rider Weight.
17m	TBC	6 - 16	Knots	Ride Bar	50 - 60cm	75kg Avg. Rider Weight.

SESSION

4m	2.00kg	22 - 40+	Knots	Ride Bar	50cm	75kg Avg. Rider Weight.
5m	2.30kg	18 - 38	Knots	Ride Bar	50cm	75kg Avg. Rider Weight.
6m	2.60kg	17 - 37	Knots	Ride Bar	50cm	75kg Avg. Rider Weight.
7m	2.70kg	16 - 36	Knots	Ride Bar	50cm	75kg Avg. Rider Weight.
8m	3.00kg	15 - 34	Knots	Ride Bar	50cm	75kg Avg. Rider Weight.
9m	3.10kg	14 - 33	Knots	Ride Bar	50cm	75kg Avg. Rider Weight.
10m	3.20kg	13 - 31	Knots	Ride Bar	50 - 60cm	75kg Avg. Rider Weight.
12m	3.60kg	10 - 26	Knots	Ride Bar	50 - 60cm	75kg Avg. Rider Weight.
14m	TBC	7 - 18	Knots	Ride Bar	50 - 60cm	75kg Avg. Rider Weight.

LIFT

7m	3.00kg	18 - 40+	Knots	Ride Bar	50cm	75kg Avg. Rider Weight.
8m	3.20kg	17 - 36	Knots	Ride Bar	50cm	75kg Avg. Rider Weight.
9m	3.40kg	16 - 35	Knots	Ride Bar	50cm	75kg Avg. Rider Weight.
10m	3.50kg	15 - 33	Knots	Ride Bar	50 - 60cm	75kg Avg. Rider Weight.
12m	4.30kg	14.5 - 32	Knots	Ride Bar	50 - 60cm	75kg Avg. Rider Weight.
14m	4.80kg	14 - 30	Knots	Ride Bar	50 - 60cm	75kg Avg. Rider Weight.

LITHIUM TEAM

7m	TBC	TBC	Ride Bar	50cm	75kg Avg. Rider Weight.
8m	TBC	TBC	Ride Bar	50cm	75kg Avg. Rider Weight.
9m	TBC	TBC	Ride Bar	50cm	75kg Avg. Rider Weight.
10m	TBC	TBC	Ride Bar	50cm	75kg Avg. Rider Weight.
12m	TBC	TBC	Ride Bar	50 - 60cm	75kg Avg. Rider Weight.
14m	TBC	TBC	Ride Bar	50 - 60cm	75kg Avg. Rider Weight.
17m	TBC	TBC	Ride Bar	50 - 60cm	75kg Avg. Rider Weight.

ULTRA TEAM

7m	1.68kg	21 - 40+	Knots	Ride Bar	50cm	75kg Avg. Rider Weight
8m	1.88kg	17 - 33+	Knots	Ride Bar	50cm	75kg Avg. Rider Weight.
9m	1.98kg	16 - 31	Knots	Ride Bar	50cm	75kg Avg. Rider Weight.
10m	2.12kg	15 - 30	Knots	Ride Bar	50cm	75kg Avg. Rider Weight.
12m	2.39kg	14 - 29	Knots	Ride Bar	50 - 60cm	75kg Avg. Rider Weight.
14m	2.62kg	13 - 28	Knots	Ride Bar	50 - 60cm	75kg Avg. Rider Weight.
17m	3.09kg	12 - 25	Knots	Ride Bar	50 - 60cm	75kg Avg. Rider Weight.

SESSION TEAM

7m	2.30kg	18 - 36	Knots	Team Bar	50cm	75kg Avg. Rider Weight.
8m	2.40kg	16 - 34	Knots	Team Bar	50cm	75kg Avg. Rider Weight.
9m	2.60kg	15 - 33	Knots	Team Bar	50cm	75kg Avg. Rider Weight.
10m	2.70kg	14 - 31	Knots	Team Bar	50 - 60cm	75kg Avg. Rider Weight.
12m	3.00kg	11 - 26	Knots	Team Bar	50 - 60cm	75kg Avg. Rider Weight.
14m	TBC	TBC		Team Bar	50 - 60cm	75kg Avg. Rider Weight.

LIFT TEAM

7m	TBC	18 - 40+	Knots	Ride Bar	50cm	75kg Avg. Rider Weight.
8m	TBC	17 - 36	Knots	Ride Bar	50cm	75kg Avg. Rider Weight.
9m	TBC	16 - 35	Knots	Ride Bar	50cm	75kg Avg. Rider Weight.
10m	TBC	15 - 33	Knots	Ride Bar	50 - 60cm	75kg Avg. Rider Weight.
12m	TBC	14.5 - 32	Knots	Ride Bar	50 - 60cm	75kg Avg. Rider Weight.
14m	TBC	14 - 30	Knots	Ride Bar	50 - 60cm	75kg Avg. Rider Weight.

RAZOR

7m	1.95kg	19 - 40+	Knots	Team Bar	40cm	75kg Avg. Rider Weight
8m	2.35kg	17 - 35	Knots	Team Bar	40cm	75kg Avg. Rider Weight
9m	2.40kg	14 - 30	Knots	Team Bar	40cm	75kg Avg. Rider Weight
10m	2.80kg	13 - 29	Knots	Team Bar	40cm	75kg Avg. Rider Weight
11m	3.00kg	12 - 27	Knots	Team Bar	50 - 60cm	75kg Avg. Rider Weight
13m	3.25kg	10 - 22	Knots	Team Bar	60cm	75kg Avg. Rider Weight
15m	3.50kg	9 - 18	Knots	Team Bar	60cm	75kg Avg. Rider Weight



